

Resources Committee Report

NATRI

NATIONAL ASSOCIATION FOR TREASURES OF RELIGIOUS INSTITUTES

Tracking

Revenue

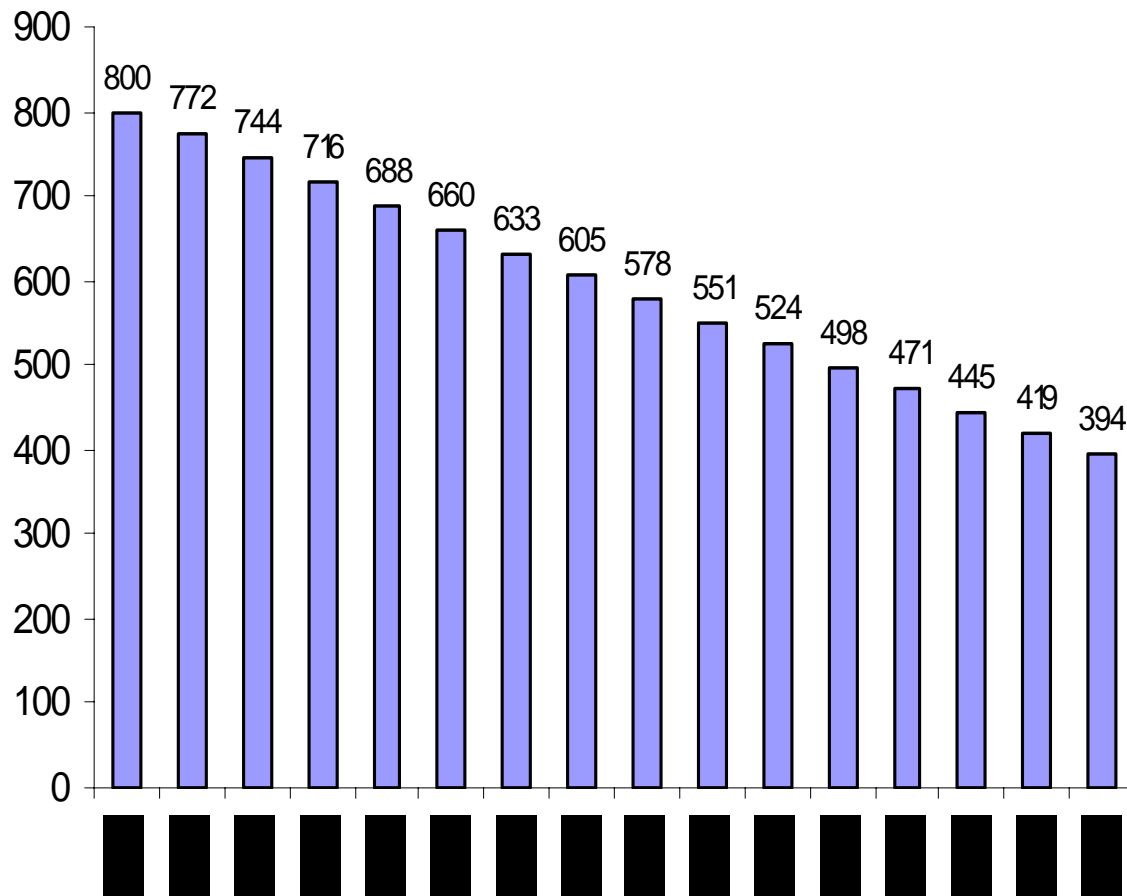
Expense

Net Assets

Demographics

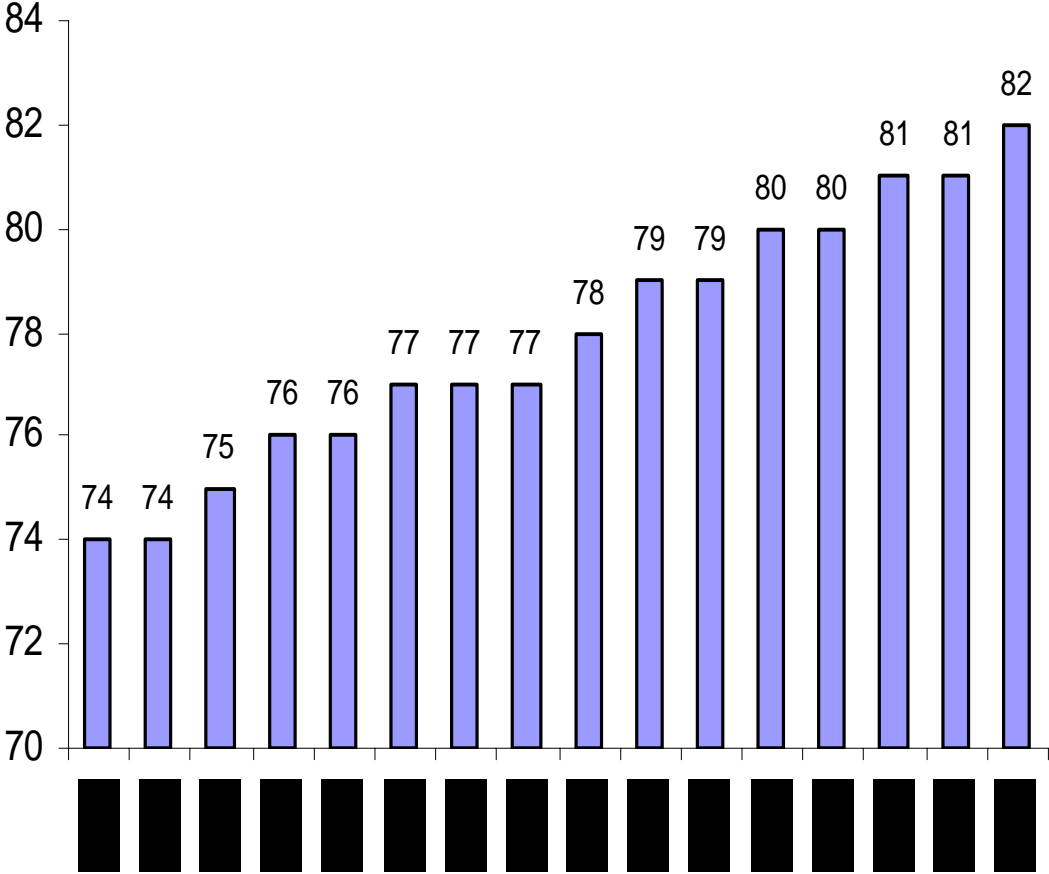
Savings

Number of Members



Based on the number of currently professed sisters. Potential new members are not included.

Median Age of Members

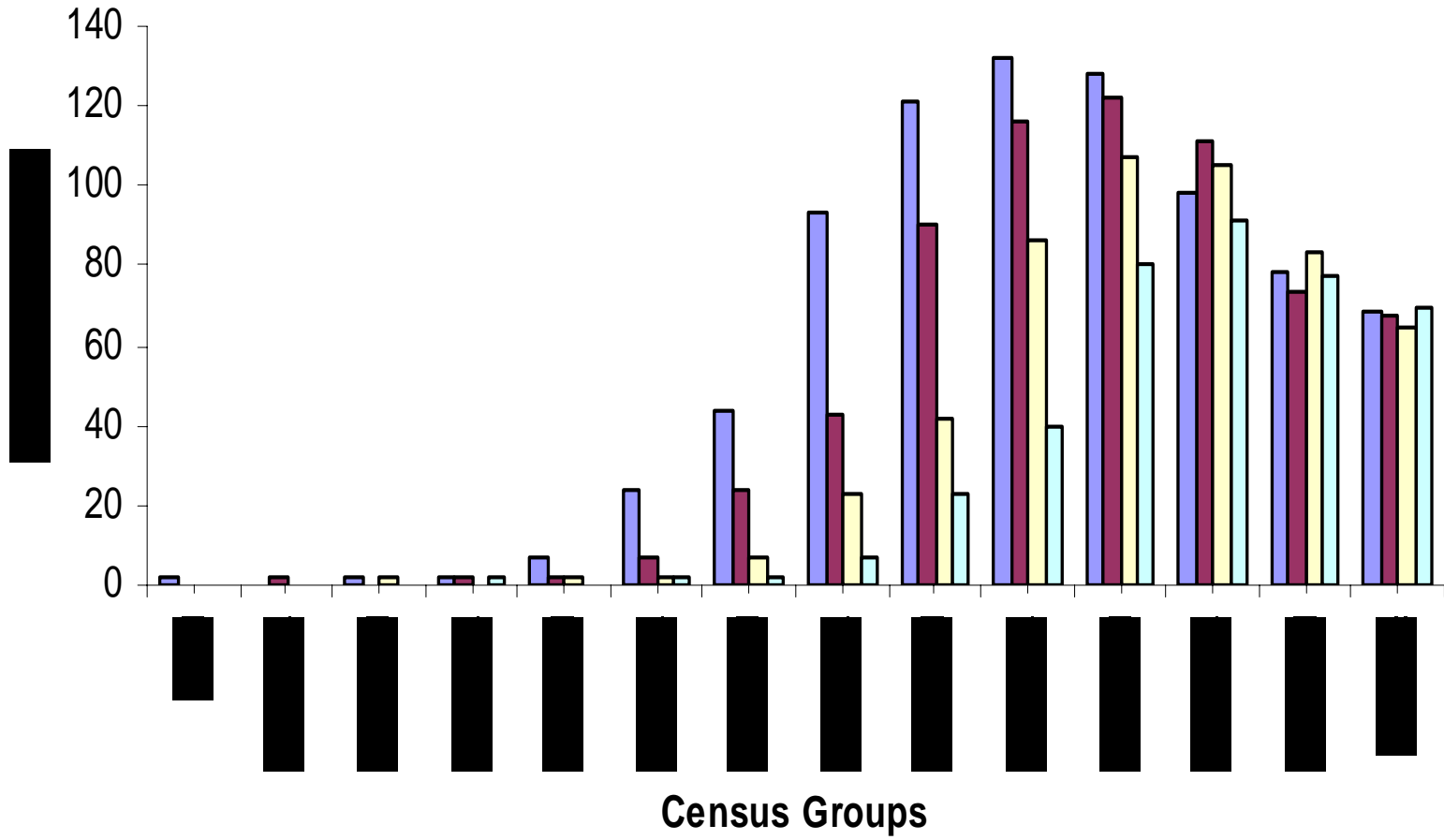


Numbers

	Akron	Columbus	EMD	Great Bend	Kentucky	Oxford	St. Mary's New Orleans	Total
Candidates/ Postulants	0	0	0	0	0	0	0	0
Novices	0	2	0	0	1	0	0	3
Temp. Professed	0	2	0	0	4	2	0	8
FT Wage Earner	29	80	10	35	46	12	15	227
FT Service (Cong)	7	35	3	11	14	3	6	79
PT Service (Cong)	6	16	2	8	4	2	5	43
PT Wage Earners	8	20	6	22	21	2	11	90
Retired (Well)	12	20	7	16	27	10	2	94
Retired (Ass't Living)	10	46	3	8	54	6	3	130
Retired (Skilled Care)	7	45	3	13	40	5	6	119
Other*	2	10	3	4	10	1	1	31

Census by 5 Year Age Groups

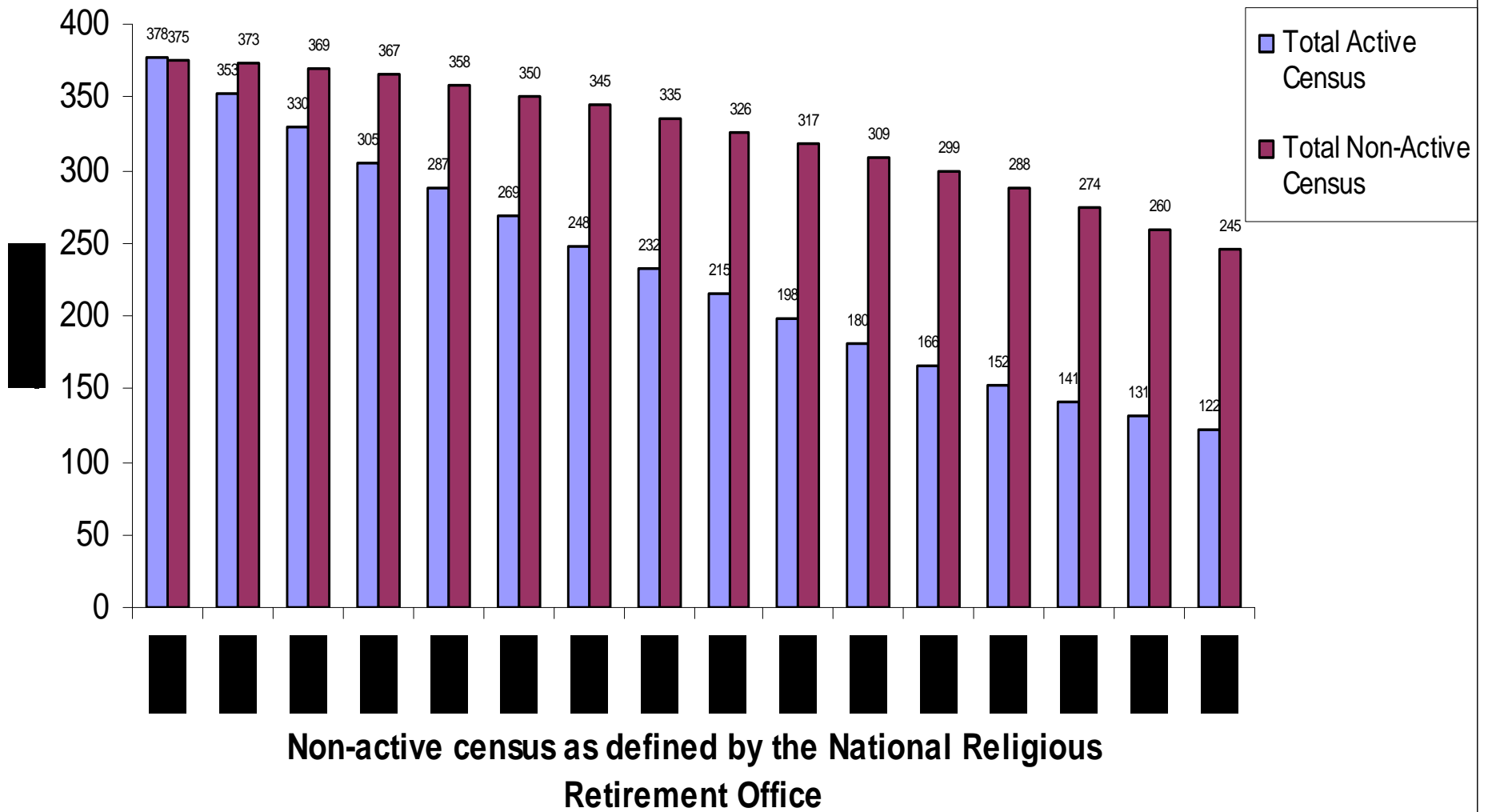
- 2005
- 2010
- 2015
- 2020



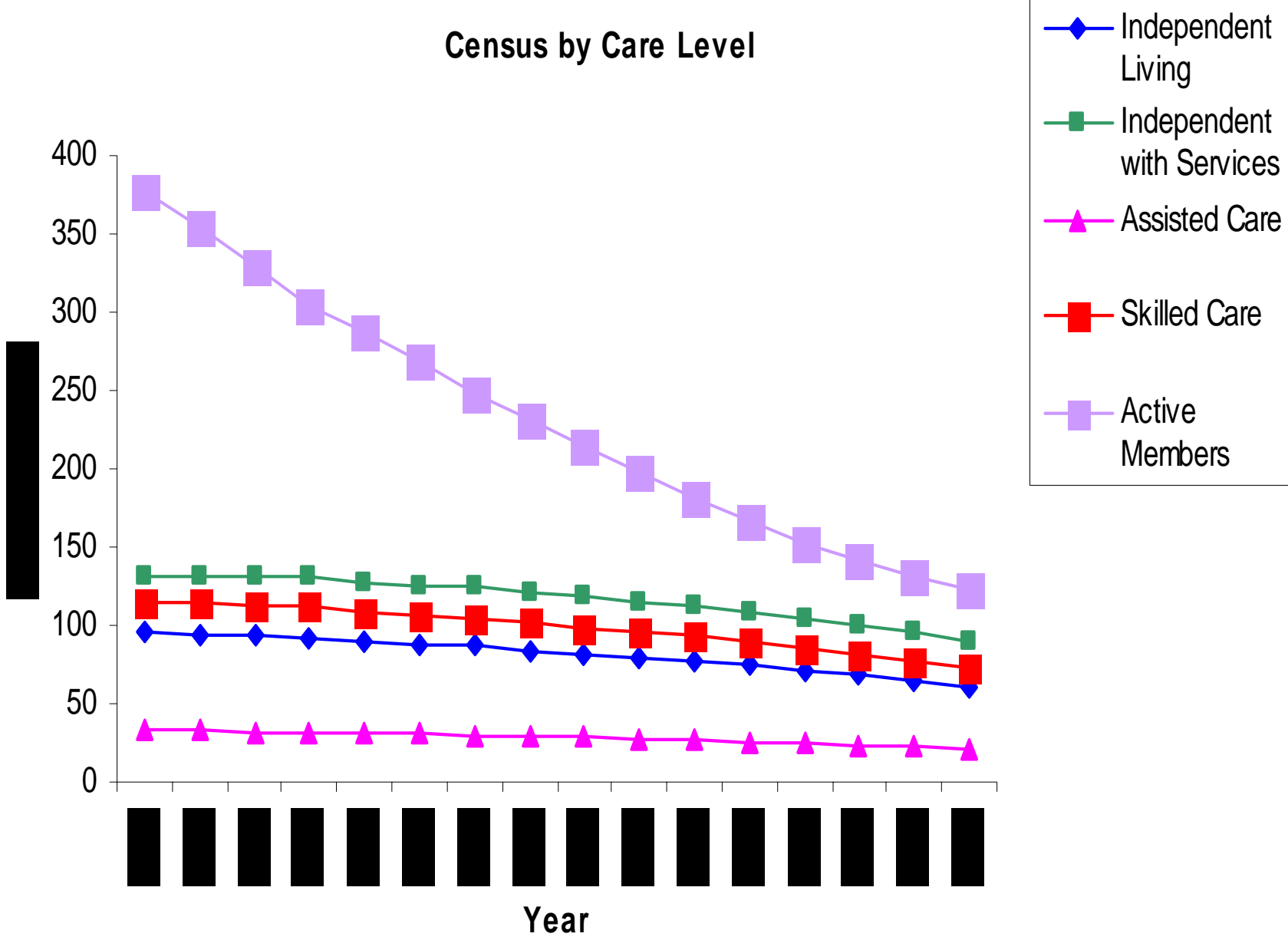
Living Configuration By Age Groups

	20-29	30-39	40-49	50-59	60-69	70-79	80-89	90+	Total
Twenty - Plus				2	24	102	129	60	317
Sixteen - Twenty			1	3	6	7	12	7	36
Eleven - Fifteen									
Eight - Ten			1		2	5	1		9
Sevens				2	3	4	5		14
Sixes					3	5	4	1	13
Fives	2	1	1	3	5	5	2	1	20
Quads		1	2	4	16	5	1		29
Triads			2	13	32	27	4		78
Dyads				15	34	35	9		93
Singles			2	26	89	66	8		191
Total	2	2	9	68	214	261	175	69	800

Active and Non-Active Census Totals



Census by Care Level



Health Care/Health Benefits

	Number in Assisted Living	Number in Skilled Care	Number Receiving Q.M.B. *	Number Receiving S.S.I. *	Number on Medicaid
Akron	10	7	22	7	7
Columbus	73	44	0	32	45
Eucharistic Missionaries	3	3	4	9	7
Great Bend	8	13	0	0	0
Kentucky	54	40	0	8	49
Oxford	7	5	0	0	3
St. Mary's	3	6	0	0	0

•**Qualified Medicare Beneficiary** - A state program that pays the Medicare B premium and deductible and co-payments for those with limited income and resources

•**Supplementary Security Income** - A federal program that gives monthly cash assistance to those who are aged, blind, or disabled and who have limited income and resources

Membership by State

State	Total Members	Total Active
AK	1	1
AZ	8	7
Canada	1	1
CO	19	18
CT	22	15
FL	3	3
GUATEMALA	1	1
HONDURAS	1	1
IL	15	14
IN	4	3
ITALY	1	1
KS	83	42
KY	127	39
LA	74	47
MA	58	34
MD	3	3
MI	42	23

Membership by State Continued

State	Total Members	Total Active
MN	1	1
MO	3	3
MS	1	1
NE	10	8
NIGERIA	1	1
NM	3	2
NY	24	19
OH	265	116
OK	1	1
OR	1	1
PA	7	6
PAPUA N.G	1	1
PERU	5	5
RI	1	1
TN	5	2
TX	2	2
VA	2	2

Membership by State Continued

State	Total Members	Total Active
WA	2	2
WI	3	3

Membership by Regions

Region 1	CT, ME, MA, NH, RI, VT	81	50
Region 2	NY	24	19
Region 3	NJ, PA (East)	7	6
Region 4	DE, MD, NC, PA, (West), SC, VA, DC, WV	5	5
Region 5	AL, FL, GA, LA, MS, PR, VI	78	51
Region 6	KY, OH, TN	397	157
Region 7	IN, MI	46	26
Region 8	IL	15	14
Region 9	WI	3	3
Region 10	IA, MO, (East), NE	13	11
Region 11	MN, ND, SD, WY	1	1
Region 12	AZ, AR, NM, TX	13	11
Region 13	CO, KS, MO, (West), OK	103	61

Membership by Regions

Region 14	CA, GU, HI, NV, UT	0	0
Region 15	AK, ID, MT, OR, WA	4	4
Outside US	CAN, GUAT, HOND, ITALY, NIGERIA, PAPUA, PERU	11	11
TOTALS		801	430