

Slide 1



Through membership in the Cluster, our congregation is embarking on a Dominican journey in faith.

(click after shield appears to advance to next slide)

Slide 2



As a result of discussion at an Alliance meeting, leaders from Akron...

(pause, then click after shield appears to advance to next slide)

Slide 3



... and Columbus began conversations that gave rise to the Cluster. (pause, then click after shield appears to advance to next slide)

Slide 4



New Orleans St. Mary's expressed an interest and was invited to join in the conversation. (pause, then click after shield appears to advance to next slide)

Slide 5



Since March 2001, the leadership teams have met regularly... (pause, then click after shield appears to advance to next slide)

Slide 6



... for the purpose of determining how to collaborate and share internal ministries in order to better proclaim the Reign of God in our time. (pause, then click after shield appears to advance to next slide)

Slide 7



Cluster activities have included shared communications, member-to-member gatherings, sending observers to congregational chapters, collaboration with vocation/formation directors, and two congregations sharing a Director of Associates. (pause, then click after shield appears to advance to next slide)

Slide 8



In December 2001 the leadership teams met in New Orleans and developed the following mission statement:

(click) **As members of the Cluster,**

(click) **we are committed**

(click) **to a process for reconfiguration**

(click) **of Sister Congregations**

(click) **for Dominican life and mission.**

(pause for a moment for audience to read, then click after shield appears to advance to next slide)

Slide 9



At their June 2002 meeting in Akron, the Leadership teams determined that a Coordinating Committee was needed, and that this committee would have the overall responsibility of moving the process forward. It was decided that this committee would consist of one leadership representative from each cluster congregation and one grassroots representative from each congregation. (click after shield appears to advance to next slide)

Slide 10



In the summer of 2003, the Eucharistic Missionaries of St. Dominic, also from New Orleans, joined the Cluster.

(pause, then click after shield appears to advance to next slide)

Slide 11



The August 2003 meeting of the CCC was the first that included representatives from the Eucharistic Missionaries. This and subsequent meetings also were attended by representatives of other congregations exploring the possibility of joining the Cluster process. (click after shield appears to advance to next slide)

Slide 12



More recently three of these other congregations voted to join the Cluster process: Kentucky... (pause, then click after shield appears to advance to next slide)

Slide 13



Oxford... (pause, then click after shield appears to advance to next slide)

Slide 14



And Great Bend, making the Cluster now an endeavor of seven congregations. All congregations now have representatives on the Cluster Coordinating Committee, as well as on the subcommittees and task force of that group. (click after shield appears to advance to next slide)

Slide 15



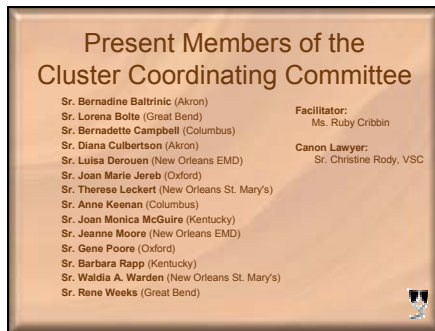
The goal of the Cluster Coordinating Committee reads:
(click) **We will involve the members**
(click) **in a discernment process that includes a**
(click) **strategic plan with action steps**
(click) **and a timeline moving us toward**
(click) **a recommendation of alternative structures**
(click) **for the reconfiguration of**
(click) **Dominican Cluster congregations.**
(pause for a moment for audience to read, then click after shield appears to advance to next slide)

Slide 16



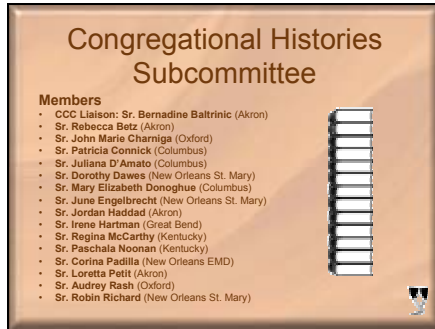
The Cluster Coordinating Committee has met five times, in November and December of 2002, and in February, August and October of 2003. There have also been several conference calls. Until recently, one prioress has always been present at the meetings and had the responsibility to keep the other prioresses informed. With the recent growth of the Cluster, this will increase to two prioresses present at each CCC meeting. (click after shield appears to advance to next slide)

Slide 17



Present members of the Cluster Coordinating Committee include:
(click) **Bernie Baltrinic**
(click) **Lorena Bolte**
(click) **Bernadette Campbell**
(click) **Diana Culbertson**
(click) **Luisa Derouen**
(click) **Joan Marie Jereb**
(click) **Therese Leckert**, who is the current chair of the committee
(click) **Anne Keenan**
(click) **Joan Monica McGuire**
(click) **Jeanne Moore**
(click) **Gene Poore**
(click) **Barbara Rapp**
(click) **Waldia Warden**
(click) **and Rene Weeks**
(click) **Ruby Cribbin** has been the Committee's facilitator, and **Christine Rody**, a Visitation Sister of Charity, is a Canon Lawyer with whom the Committee consults.
(click after shield appears to advance to next slide)

Slide 18



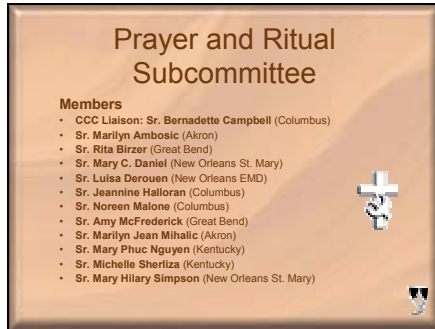
Four subcommittees and a task force have been established to assist in the process. One of these is the Congregational Histories Subcommittee. (click) Members of this subcommittee include (click) CCC Liaison: Bernadine Baltrinic; (click) Rebecca Betz (click) John Marie Charniga (click) Patricia Connick (click) Juliana D'Amato (click) Dorothy Dawes (click) Mary Elizabeth Donoghue (click) June Engelbrecht (click) Jordan Haddad (click) Irene Hartman (click) Regina McCarthy (click) Paschala Noonan (click) Corina Padilla (click) Loretta Petit (click) Audrey Rash (click) and Robin Richard. (click) (click after shield appears to advance to next slide)

Slide 19



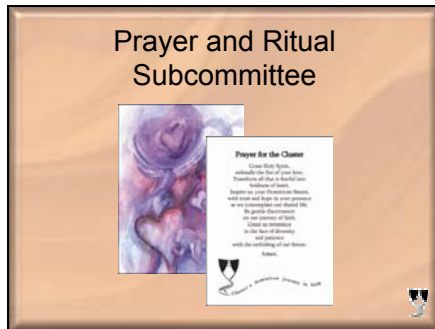
The purpose of this subcommittee is to develop an appreciation for the richness that flows from our diverse origins and our experiences rooted in our common Dominican charism. (click after shield appears to advance to next slide)

Slide 20



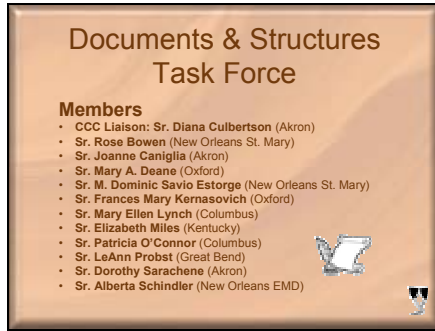
Another of the subcommittees established is the Prayer and Ritual Subcommittee. (click) Members of this subcommittee include (click) CCC Liaison Bernadette Campbell; (click) Marilyn Ambosic (click) Rita Birzer (click) Mary C. Daniel (click) Luisa Derouen (click) Jeannine Halloran (click) Noreen Malone (click) Amy McFrederick (click) Marilyn Jean Mihalic (click) Mary Phuc Nguyen (click) Michelle Sherliza (click) and Mary Hilary Simpson. (click after shield appears to advance to next slide)

Slide 21



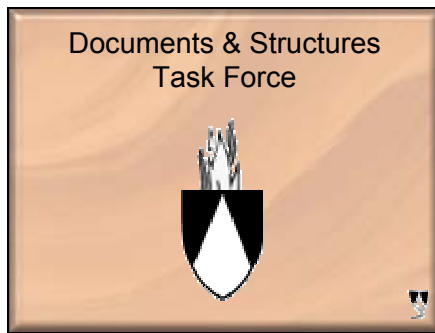
The purpose of this subcommittee is to plan and implement prayer and ritual for congregational and inter-congregational gatherings. As an example, the Prayer and Ritual Subcommittee planned both today's prayer and the Cluster prayer cards. (click after shield appears to advance to next slide)

Slide 22



A task force to examine documents and government structures has also been established. (click) Members of the Documents and Government Structures Task Force include (click) CCC Liaison Sr. Diana Culbertson; (click) Rose Bowen (click) Joanne Caniglia (click) Mary A. Deane (click) M. Dominic Savio Estorge (click) Frances Mary Kernasovich (click) Mary Ellen Lynch (click) Elizabeth Miles (click) Patricia O'Connor (click) LeAnn Probst (click) Dorothy Sarachene (click) and Alberta Schindler. (click after shield appears to advance to next slide)

Slide 23



The purpose of this task force is to understand how the spirit and charism of each Cluster Congregation has been institutionalized and structured, and to uncover significant unwritten norms and customs. (click after shield appears to advance to next slide)

Slide 24



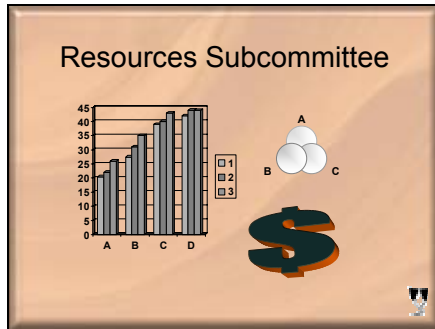
Resources Subcommittee

Members

- CCC Liaison: Sr. Jeanne Moore (New Orleans EMD)
- Sr. Suzanne Brauer (New Orleans EMD)
- Sr. Mary Faith Geelan (Columbus)
- Sr. M. Judene Lillie (New Orleans St. Mary)
- Sr. Judith Lindell (Great Bend)
- Sr. Gene Poore (Oxford)
- Sr. Rosemarie Robinson (Akron)
- Sr. Marie Jeanne Surette (Kentucky)

Exploring resources will be done by another subcommittee. (click)
Members of the Resources Subcommittee include (click) CCC Liaison Sr. Jeanne Moore; (click) Suzanne Brauer (click) Mary Faith Geelan (click) M. Judene Lillie (click) Judith Lindell (click) Gene Poore (click) Rosemarie Robinson (click) and Marie Jeanne Surette. (click after shield appears to advance to next slide)

Slide 25



Resources Subcommittee

A bar chart shows data for categories A, B, C, and D. The y-axis ranges from 0 to 45. Category A has three bars (1, 2, 3) with values approximately 20, 25, and 30. Category B has three bars with values approximately 30, 35, and 40. Category C has three bars with values approximately 35, 40, and 45. Category D has three bars with values approximately 40, 45, and 50. A legend indicates three series: 1 (white), 2 (grey), and 3 (black). To the right is a diagram with three circles labeled A, B, and C, and a large dollar sign below it.

The purpose of this subcommittee is to explore human, financial and property resources of the congregations, including actuarial information and future projections. (click after shield appears to advance to next slide)

Slide 26



Sponsored Institutions Subcommittee

Members

- CCC Liaison: Sr. Barbara Rapp (Kentucky)
- Sr. Denise Bourgeois (New Orleans St. Mary)
- Sr. Mary Louise Edwards (Kentucky)
- Sr. Louise Hageman (Great Bend)
- Sr. Diane Hooley (New Orleans EMD)
- Sr. Dorothy Mattingly (Akron)
- Sr. Sue McMahon (Oxford)
- Sr. Barbara Jean Pelak (Oxford)
- Sr. Anita Schugart (Great Bend)
- Sr. Mary Hope Sieron (Columbus)

Another subcommittee was recently formed to attend to the sponsored institutions and supported ministries of all the Cluster congregations. (click)
Members of is subcommittee include (click) CCC Liaison Sr. Barbara Rapp; (click) Denise Bourgeois (click) Mary Louise Edwards (click) Louise Hageman (click) Diane Hooley (click) Dorothy Mattingly (click) Sue McMahon (click) Barbara Jean Pelak (click) Anita Schugart (click) and Mary Hope Sieron. (click after shield appears to advance to next slide)

Slide 27



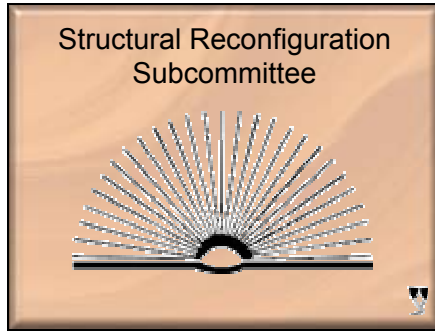
The purpose of the Sponsored Institutions & Supported Ministries Subcommittee is to compile information regarding the institutions and ministries of each congregation, and explore the special relationships between them and the congregations. (click after shield appears to advance to next slide)

Slide 28



Another of the subcommittees established is the Structural Reconfiguration Subcommittee. (click) Members of this subcommittee include (click) CCC liaison Waldia Warden; (click) Janice Bachman (click) Maria Beesing (click) Denise LeJeune (click) Peggy Martin (click) Delia McDonald (click) Claire McGowan (click) Connie Schoen (click) Mariellen Phelps (click) Patricia Thomas (click) Eleanor Tierney (click) and Carmelite Zibilich. (click after shield appears to advance to next slide)

Slide 29



The purpose of this subcommittee is to receive membership responses from congregational and inter-congregational gatherings, and to formulate recommendations to the CCC regarding structural reconfiguration. (click after shield appears to advance to next slide)

Slide 30



Finally we have the Communications Subcommittee. (click) Members of this subcommittee include (click) CCC Liaison Anne Keenan; (click) Shirley Bodisch (click) Catherine Colby (click) Theresa Damicone (click) Dana Hinton (click) Yvonne Horning (click) Gene Poore (click) and Susan Satter. (click) Karen Clay, the Communicator for the Cluster, also works with this subcommittee. (click) (click after shield appears to advance to next slide)

Slide 31



The purpose of this subcommittee is to disseminate effective communication that will encourage bonding among members of the Cluster Congregations. (click after shield appears to advance to next slide)

Slide 32

Discernment Process

An invitation for each member:

- To enter into a prayerful, reflective process with a heart free and open to God's will
- To trust in God's spirit present in oneself and others
- To gather the information needed to discern
- To study and sift the information discovering implications
- To make a decision based on Dominican mission and values



The Cluster Coordinating Committee has determined a structure of process cycles that will facilitate the discernment process. (click)

Discernment invites each person:

(click) To enter into a prayerful, reflective process with a heart free and open to God's will

(click) To trust in God's spirit present in oneself and others

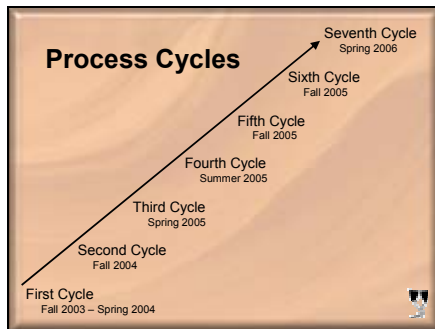
(click) To gather the information needed to discern

(click) To study and sift the information discovering implications

(click) To make a decision based on Dominican mission and values

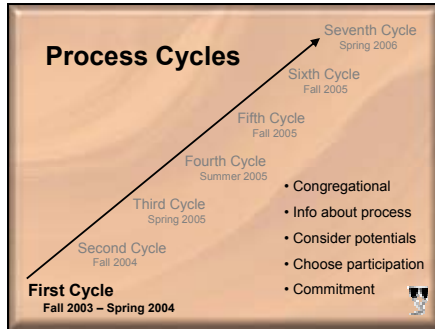
Maximum participation is needed in order to have maximum ownership of the decision. (click after shield appears to advance to next slide)

Slide 33



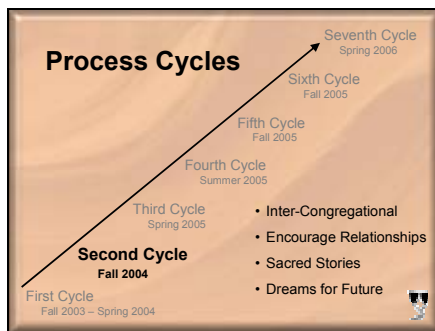
These cycles of our Dominican journey in faith are designed to offer members, personally and as a group, opportunities to be truly involved in the discernment process. (click after shield appears to advance to next slide)

Slide 34



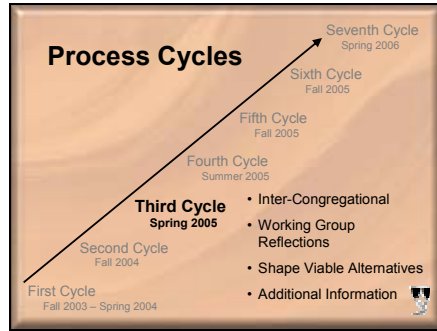
(pause for animation) We begin the first cycle in our individual congregations (click) insuring that all the information about the process (click) is presented and understood, as we are doing here today. There is an opportunity to consider the potentials (click) of being involved in this process, and to choose the way (click) for each one to participate. It is our initial step on the journey that calls forth our ownership and commitment (click) to what will follow. (click after shield appears to advance to next slide)

Slide 35



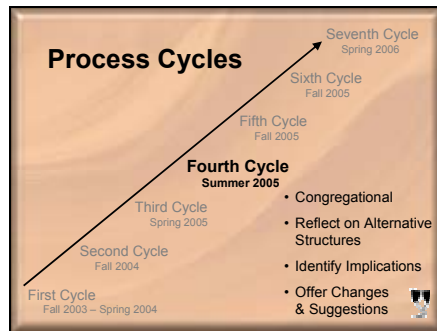
(pause for animation) The second cycle involves inter-congregational gatherings (click) in two different sites. These gatherings will encourage making (click) and deepening relationships across the cluster congregations, and touching into the sacred story (click) of each community. After receiving input from working groups, members will be invited to offer dreams (click) for the future. Between the second and third cycle the responses from members will be studied by the CCC and appropriate working groups. (click after shield appears to advance to next slide)

Slide 36



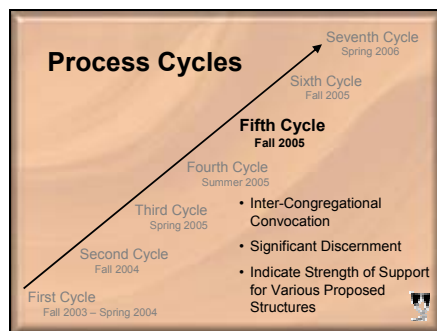
(pause for animation) In the third cycle, which is one inter-congregational gathering (click), possibilities for the future from the reflections by the working groups (click) will be evaluated by members, and shaped into viable alternatives (click) for reconfiguration. Any additional information (click) needed will be requested by members. (click after shield appears to advance to next slide)

Slide 37



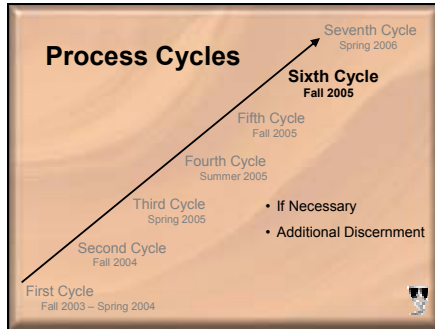
(pause for animation) As a result of the responses from the third cycle, the working groups will shape alternative structures to be evaluated during the fourth cycle. This gathering is in our individual congregations (click) and includes reflections on the alternative structures (click) from the perspective of various working groups. With this information members will identify significant implications (click) for each alternative structure, and may offer changes (click) and suggestions. (click after shield appears to advance to next slide)

Slide 38



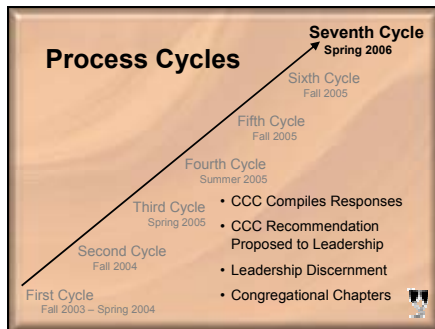
(pause for animation) Again these responses will be refined into several proposed structures that will be evaluate during the Inter-Congregational (click) Convocation of the fifth cycle. The mood of celebration for the blessings thus far, the deepening of relationships, and the wisdom gleaned from the involvement of members in the process, will create an environment in which significant discernment (click) may happen. An opportunity will be provided for members to indicate the strength of support (click) for each proposed structure. (click after shield appears to advance to next slide)

Slide 39



Depending on the responses from the fifth cycle (click), an additional sixth cycle may be needed for discernment (click). (click after shield appears to advance to next slide)

Slide 40



(pause for animation) The responses will be compiled by the CCC (click) and presented to the leadership as a recommendation (click) on the proposed structures, and will include an indication of membership support. This action in the seventh cycle completes this process and leads to the discernment by leadership (click). From all of this information, leadership will choose a structure for reconfiguration that will be presented to congregational chapters (click) for decision. If necessary, after the chapter decision a separate decision is made by each member of each congregation. (click after shield appears to advance to next slide)

Slide 41

Process Cycles

	Jan	Feb	Mar	Apr	May	Jun	Jul	Aug	Sep	Oct	Nov	Dec
'03									Cong Meetings			
'04			Cong Meetings						Inter-Cong Gatherings			
'05			Inter-Cong Assembly			Congregational Meetings				Inter-Cong Convocation		
'06	Personal Discernment & Recommendations to Leadership											

Here is a four-year synopsis of the timeline for these process cycles.

(pause for short while for congregation to view thoroughly, before clicking after shield appears to advance to next slide)

Slide 42

Roles and Responsibilities

Membership

- Offers basic vision, values and priorities regarding reconfiguration
- Evaluates and offers consultation on any proposed structure
- Identifies implications for all alternatives
- Indicates strength of support for final alternatives
- Holds Dominican Mission and Values as central to all consultation

The Roles and Responsibilities for all members of the congregations are of utmost importance. (click) The membership

(click) Offers basic vision, values and priorities regarding reconfiguration;

(click) Evaluates and offers consultation on any proposed structure;

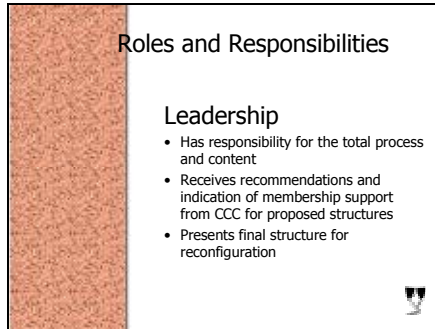
(click) Identifies implications for all alternatives;

(click) Indicates strength of support for final alternatives;

(click) And holds Dominican Mission and Values as central to all consultation.

(pause for congregation to read thoroughly, before clicking after shield appears to advance to next slide)

Slide 43



The congregational Leadership Teams also have important responsibilities.

(click) The Leadership

(click) has responsibility for the total process and content;

(click) Receives recommendations and indication of membership support from the CCC for proposed structures;

(click) And presents final structure for reconfiguration for decision making by Congregational Chapters.

(pause, then click after shield appears to advance to next slide)

Slide 44



Our father Dominic took risks in order to preach the Gospel more effectively in his time. In our own time, the Cluster journey calls us to take some risks in order to better utilize our congregational resources for the preaching of the Gospel. As we participate in the Cluster discernment process, let us pray for openness and remember that our faithful and provident God is with us on this Cluster journey of faith. Let us move into the future filled with hope and trusting that God will lead us in the way we should go. May we resonate with the words of our French Dominican brother Lacordaire who wrote, 'All I know of tomorrow is that providence will rise before the sun.'

(click when ready to end show)

(press Esc key to exit)